

# Steel Doors Solutions



TASKDOOR include :  
WOOD DOORS | STEEL DOORS | FRAMEWORKS | SPECIALTY DOORS

Leader in door opening solutions supporting end-user for safety, security and suitability.



# TASK Current



*With over 25 years in the custom hollow metal business TASKDOOR manufacturing capabilities go well beyond most hollow metal manufactures abilities. TASKDOOR custom frames are available in made to order configurations, profiles and backbends to suit your design needs. Including, plan, knocked down or welded.*



## Specialty Products

To complement our standard and custom steel doors and frames, TASKDOOR offers a number of specialty products. Our specialty products offering enhance our ability to be a sole source supplier for any project.

TASKDOOR opening solutions ensure the efficient flow of both people and goods. Our integrated door solutions are created to match your needs. Best of all, they do it with the perfect balance of cost, quality and lifetime performance.

A security solution requires enhancing the experience of the visitors whilst ensuring safety and convenience. Public facilities need to be open to the public yet well protected against intruders, theft, vandalism and fires. Products require blending in with historic architecture or modern glass structures. Sports centers, concert halls and museums are among some of the public facilities that require emergency escape routes solutions that guarantee visitors' safety.

## Standard & Fire Doors

TASKDOOR offer a complete line of standard hollow metal doors in face sheet ranging from 1mm to 3mm. We also provides a variety of core choices including honeycomb, steel stiffened with hat 'Z' or 'C' channels polystyrene, polyurethane foam and temperature rise cores. TASKDOOR temperature rise doors offer the maximum in fire and life safety as they have a temperature rise rating of 250 degrees F. Fire ratings are available from 20 minutes through 3 hours. TASKDOOR also provides energy efficient doors. The combined durability and economy of our doors make TASKDOOR a popular choices for a variety of users.

## Steel-stiffened doors

TASKDOOR steel-stiffened doors are used in areas where security and vulnerability to vandalism and break-in are of concern. Face sheets are available from 1.2 to 1.8mm with door thicknesses of both 1-3/4" and 2". Fire ratings are available from 20 minutes through 3 hours. Steel stiffened TASKDOOR offers a range of products suited for institutional and commercial security uses.

# A popular distributor door (handed) (non-handed)

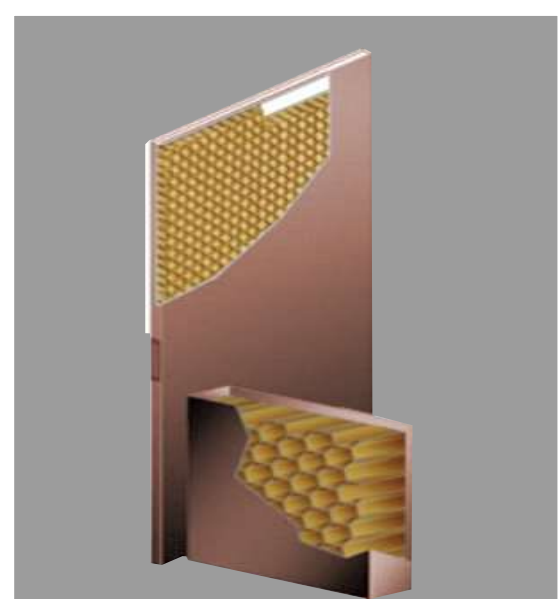
# Regente

*Regente combines the aesthetic advantage of a beveled lock edge with the rigidity and impact resistance of TASKDOOR honeycomb core construction. Where the versatility of a non-handed door is an important advantage, Regente offers a honeycomb core construction which can be switched on the job site to right or left handed openings, swing in or out, or as double doors.*

Regente's lock edge is beveled 1/8" in 2" to produce a tight closure clearance. Face sheets are supported by full honeycomb core to assure exceptionally flat surfaces with high structural resistance to impact damage. Regente accepts cylindrical, mortise and unit locks and is adaptable to other commercial hardware.

## Standard Features

- 1-3/4" thick full flush (seamless optional) styles available from 1mm to 1.3mm steel face sheets.
- Galvanized steel.
- "STC" (sound transmission class): 39 sealed in place.
- Impact resistant, full honeycomb core.
- Hemmed, smooth finish edges.
- Seamless edges available.
- Hinge reinforcement 4.5mm.
- Chemically treated for paint adhesion. Oven-dried baked-on factory primer.
- Mechanical interlock eliminates weld marks, adds rigidity.
- Inverted top and bottom end channels projection welded to both face sheets for added stiffness. Optional steel closing caps available.
- Easy to glaze with snap-in screw.
- Optional factory applied glazing available.
- Anti microbial coating for all your healthcare needs.
- Optional Low Level blast resistant with fire rating.



## Regente Fire Doors

- Honeycomb core. Option of Intertek or BM Trada label.
- Classified for openings rated at up to three hours (class A,B,C,D,E, and 20 minute).

## Maximum Size:

- 20 to gage: 4'0 x 8'0 single
- 18 or 16 gage: 8'0 x 9'0 pair.

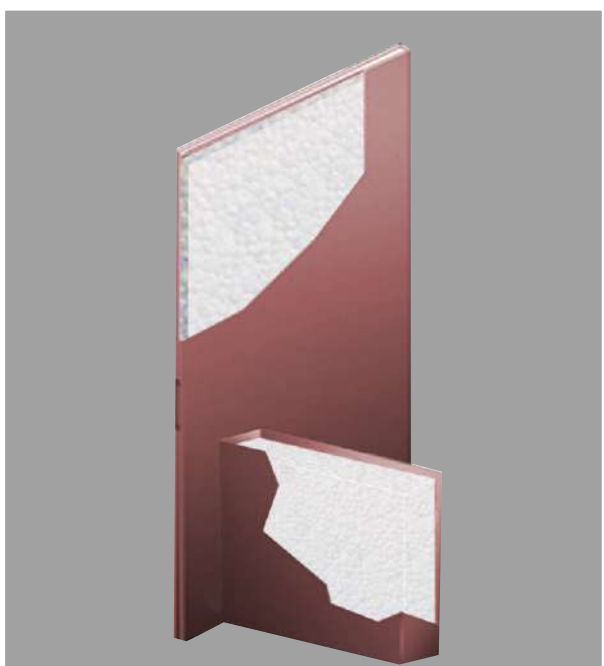
Tested and approved for use Internationally under BS476 Part 22, 1987 (British); and American Standard for fire ratings of 30,60, 90, 120 and 240 minutes.

# Energy Efficient Solutions

Solutions Perfect for Condominiums, Assisted living complexes, Multi-family entrances, Hotels, Office buildings, and Dormitory complexes. (handed)(non-handed)

# Victor

*The TASKDOOR Victor Door makes a grand impression and adds elegance and sophistication to any room or entrance. Underneath the exterior skins is an energy efficient polystyrene core making this door an important solution to today's building requirements.*



## Performance

- Fire rating: Up to and including 3 hours 3'0" x 8'0" singles and 8'0" x 8'0" pairs as per American standard.

**Core material:** Polystyrene core. Classified for openings rated is up to three hours (Class A,B,C,D,E, and 20 minute).

## Maximum Size

- 4'0" x 8'0" single
- Upto 90 minutes
- 8'0" x 8'0" pair

3'4" and 8'0" for rating upto 3 hours.  
Sheet thickness 1mm to 1.6mm.

Victor offers a polystyrene core construction which can be switched on the job site to right or left handed openings, swing in or out, or as double doors. Design, durability, and energy efficiency makes the TASKDOOR Victor door a cost effective alternative to stile and rail wood doors.

## Standard Features

- 1-3/4" (44.4 mm) insulated full flush design - rated for light to extra-heavy-duty use.
- Galvanized steel.
- Hemmed, smooth finish edges.
- Seamless edges available.
- Hinge reinforcement 4.5mm.
- Chemically treated for paint adhesive  
Oven-dried baked-on factory primer.
- Inverted top and bottom end channels welded to both face sheets for added stiffness.
- Optional factory applied glazing available.
- Lock edge beveled 1/8" in 2" (1:16).
- 4-1/2" (114.3 mm) or 5" (127.0 mm) standard or heavy-weight, full mortise hinges.
- For cylindrical or mortise locks and other standard template hardware.
- Polystyrene core provides insulation characteristics and resistance to impact.
- Core is chemically bonded to face sheets providing total surface support.
- Anti microbial coating for all your healthcare needs.

# Solutions for any room or entrance. (handed) (non-handed)

# Tiara

*TASKDOOR – Tiara. Our Energy efficient doors stand up to rugged traffic conditions. Tiara doors are furnished with a foamed-in-place polyurethane core to assure excellent insulating characteristics plus, exceptionally flat surfaces complete chemical bonding of all interior surfaces. Trapped polyurethane foam provides a stable, durable insulation, superior to other foam products. Non-handed and fully reversible on the job site, Tiara can be used for right or left hand opening, swing in or out, single or in pairs. Lock edge beveled 1/8" in 2" tight closure appearance.*

## Standard Features

- 1-3/4" thick polyurethane core available from 1mm to 1.6mm galvanized steel.
- Face sheets are totally supported by rigid polyurethane for increased impact resistance.
- Superior insulating characteristics.
- Hemmed, smooth finish edges.
- Seamless edges available.
- Hinge reinforcement 7 4.5mm.
- Chemically treated for paint adhesion. Oven dried baked-on factory primer.
- A wide range of door edge options available.
- Inverted top and bottom end channels projection welded to both face sheets for added stiffness. Optional steel closing caps available.
- Easy to glaze with snap in screws.
- Optional factory applied glazing available.
- Anti microbial coating for all your healthcare needs.
- Louver option available.

## Available Options:

- 20 gage - Level I , Standard Duty.
- 18 gage - Level II, Heavy Duty.
- 16 - Level III, Extra Heavy Duty.

## Tiara Fire Doors:

- Approved for labeling under American Standard for Neutral Pressure Door Assemblies.
- Polyurethane core.
- WH label.
- Classified for openings rated at up to three hours (Class A,B,C,D,E, and 20 minute).



## Maximum Size

- 4'0" x 8'0" single.
- Upto 90 minutes.
- 8'0" x 8'0" pair.
- 3'4" 8'0" Single upto 180 minutes.

# Solutions for temperature rise. (exterior and interior openings)

# Cresta

*TASKDOOR - Cresta is designed specifically for openings, such as stairwells, and for office, Motel/Hotel, Apartment, Condominiums, Public Housing, Health care, Educational, Factory Warehouse, Institutional, Mercantile, Dormitories that require conformance to fire protection recommendations for maximum temperature rise requirements. Constructed with smooth, flush face sheets and neat hemmed edge seams (seamless), it can be furnished for use with appropriate frame, hardware, and exit devices as required.*

The Cresta temperature-rise rated door will allow the unexposed side of the door to only reach a maximum of 250°F during the first 30 minutes of the fire test.

## Standard Features

- 1-3/4" thick full flush(Seamless Optional).
- Galvanized steel.
- Hemmed, smooth finish edges.
- Seamless edges available.
- Hinge reinforcement 4.5mm.
- Chemically treated for paint adhesive oven-dried baked-on factory primer.
- A wide range of door edges options available.
- Inverted top and bottom end channels welded to both face sheets for added stiffness.
- Easy to glaze with snap in screw.
- Optional factory applied glazing available.
- Anti microbial coating for all your healthcare needs.
- Temperature Rise Fire Doors
- Solid Mineral Fiber Core - Steel Glazing Trim
- WH label: classified for up to 3 hours
- Class A, B, C, D and E with temperature ratings of 250 degrees Fahrenheit.



### Maximum size:

- 1mm to 1.6mm gauge steel face sheets
- Single: 4'0" x 8'0"
- Pair: 8'0" x 7'2"
- Pair: 8'0" x 8'0" (3 hour)
- Classified for use with all labeled fire exit hardware.
- Double egress (1-1/2 Hour)

Approved for use Internationally under american standard.

# Solutions for Holding or Security Areas. (exterior and interior openings)

# Stalwart

*TASKDOOR Stalwart A Quality Security Door is designed specifically for openings where vandalism is a problem or restraint is a requirement. Best for use at Police Stations, Shopping Centers, Public forums, Courthouses, Municipal Buildings, Stadiums, Hospitals, Water Treatments, Airports, Un-manned buildings.*

## Standard Features:

- Grade 3 or Grade 4 Security Door System.
- 1-3/4 or 2" Thick Extra Heavy Duty Construction.
- 1mm to 1.6mm galvanized steel.
- Rated to American and British standard.
- Meets ANSI, NAAMM, HMMA 863-98 standards for commercial security products.
- "STC" (Sound transmission class) : 45 sealed in place.
- Vertically steel - stiffened construction with three options of stiffener - hat, 'Z' and 'C'..
- Hemmed, smooth finish edges.
- Seamless edges available.
- Hinge reinforcement 4.5mm.
- Chemically treated for paint adhesion. Over dried baked on factory primer.
- Mechanical interlock eliminates weld marks, adds rigidity. We have a wide range of door edge options.
- Optional factor applied glazing available.
- Anti microbial coating for all your healthcare needs.
- Optional low level blast resistance with fire rating.



## Size:

- 4'0" x 8'0" for single door upto 180 minutes.
- 8'0" x 8'0" for double door upto 180 minutes.
- 4'0" x 10'0" for single door upto 90 minutes.
- 8'0" x 10'0" for double door upto 90 minutes.



# Solutions for highly corrosive or clean room environments

# Majestic

*TASKDOOR offers a full line of stainless steel doors and frames for a wide range of applications: from highly corrosive or clean room environments such as where Sound Resistance is required, High Style Architectural Environments, Commercial or Institutional Projects, Health Care Facilities, Exterior in Coastal Areas, Pulp and Paper Mills, Pharmaceutical Plants, Research Laboratories, Sanitation, Food Processing, Water Treatment, Chemical Plants, Refineries to aesthetically appealing building lobbies. A variety of sizes and configurations are available.*



## Standard Features:

- Honeycomb.
- 1-3/4" thick full flush styles available from 1mm to 1.6mm.
- 300 and 400 series stainless steel options.
- Hemmed, smooth finish edges.
- Hinge reinforcement 4.5mm.
- A wide range of edge options is available.
- Inverted top and bottom end channels projection welded to both face sheets for added stiffness.
- Optional factory applied glazing available.
- Anti microbial coating for all your healthcare needs.

## Alloy:

- No. 304, the most commonly used stainless alloy
- No. 316, for installation in extremely corrosive

## Finishes:

- No. 4 (Brushed Satin)
- No. 6 (Fine Satin)
- No. 8 (Mirror)
- No. 2B (Mill)
- Note: When a finish, such as No.4 is specified, the "grain" on the face of the door jambs and head is in a vertical direction to present a uniform visual appearance.

## Size:

- 4'0" x 8'0" upto 90 minutes.
  - 8'0" x 8'0" upto 90 minutes.
  - 3'4" x 8'0" upto 180 minutes.
  - 8'0" x 8'0" upto 180 minutes.
- Rated to American standards.



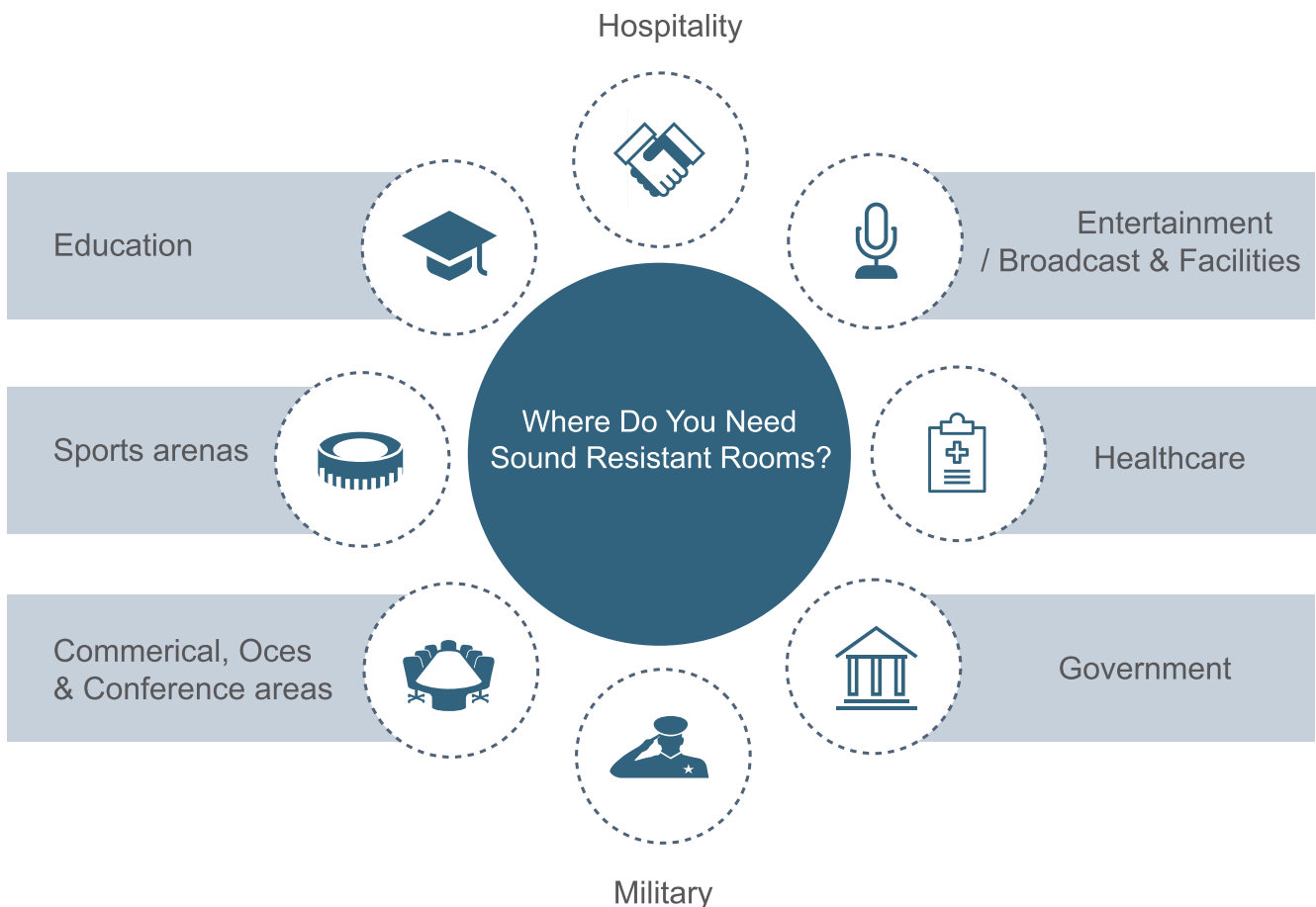
# Sound Solutions

# Trankuil WOOD STEEL STC 25 to STC 57

*TASKDOOR have developed acoustical assemblies using light weight sound absorbing techniques which are the noise solution for any facility. High STC ratings are typically needed to create sound resistant rooms for the government/military, airports, school band rooms and to isolate performance halls from exterior noise. Relatively lower STC ratings will usually suffice for less demanding applications, such as solving a noise problem in a hotel or office building. Trankuil Systems cover the low to high STC range, allowing them to be the solution for almost any application. Trankuil Door Systems include door, frame and approved seal systems with a certified label and are lighter than most sound doors of equal STC rating in the industry.,*

Our Acoustic door comes with the follow option.

- 1) Fire Rating upto 3 hours
- 2) Wood look finish
- 3) Blast Resistant
- 4) Bullet Resistant
- 5) Antimicrobial coating for all your healthcare needs.



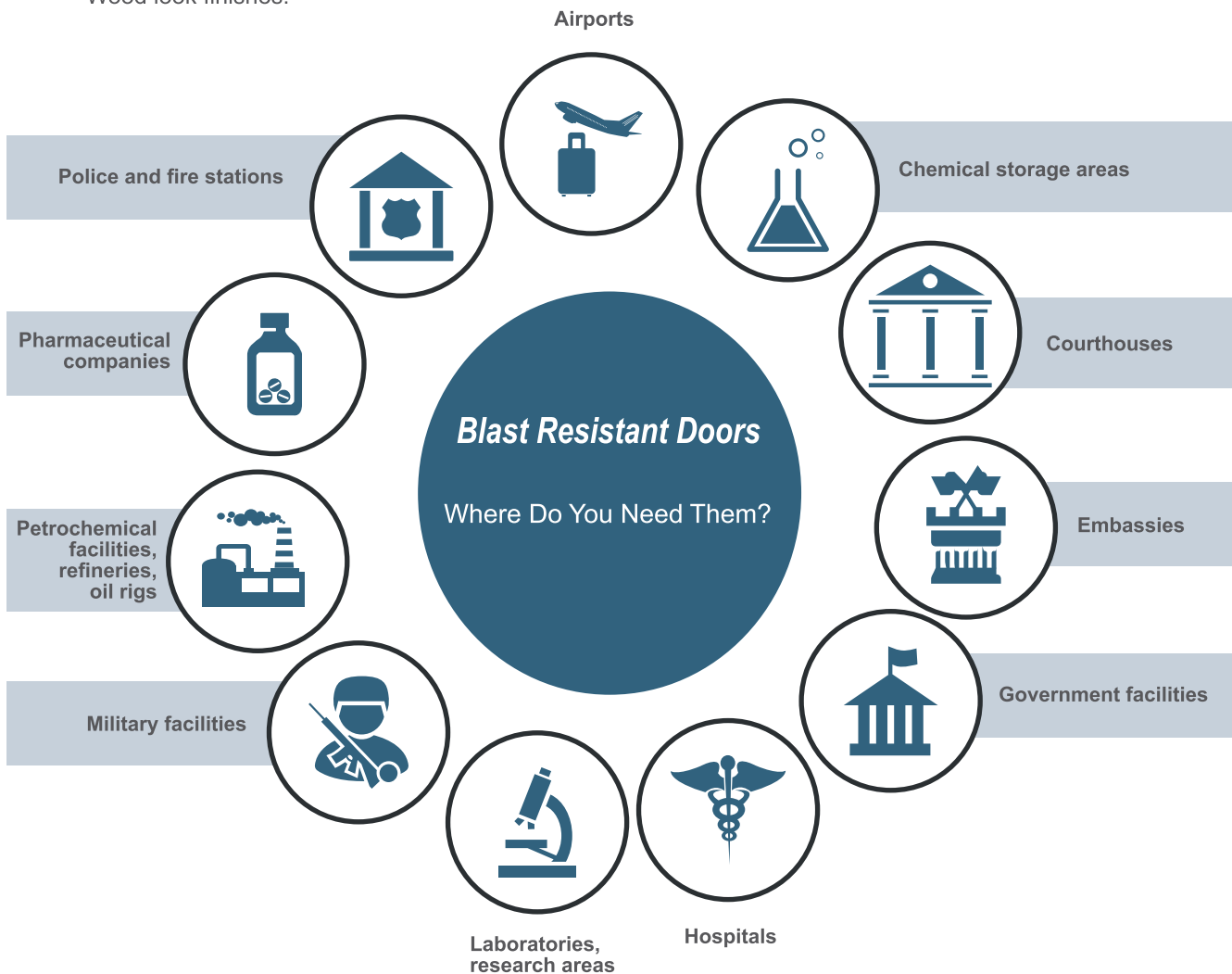
# Property / Protection



*TASKDOOR developed Blast Resistant Opening Solutions to meet Government, Military, Embassy safety and security objectives for blast resistance. Providing extra protection against explosions and excessive force, our blast resistant openings meet or exceed the stringent manufacturing and performance requirements of the Defense, Security and other regulatory groups.*

Our blast resistant door comes with the following options.

- Low Level Blast Resistant door can also be fire rated.
- We can combine blast and bullet resistance in one door with fire rating options.
- Antimicrobial coating for all your healthcare needs.
- High STC rating for high security areas.
- Wood look finishes.



# Life-Safety Solutions

**BULLET  
RESIST**

**Bullet Resistant**

**Level 1 to Level 8**

*TASKDOOR BulletResist system offers the absolute best protection against bullet penetration and fragmentation. TASKDOOR use of "secretshield" protects against assault and vandalism at vulnerable door openings.*

These systems are available in standard door sizes and constructed with 2.4mm face skins with steel stiffened, honeycomb or polystyrene cores. The BulletResist System is also available prefinished (Level 1-8) with bullet resistant glass. Frames are 2.4mm steel with welded corners. Bullet Resistant Level 1 to 3 and Level 6 has option of fire rating upto 180 minutes.

## Forced Entry Bullet Resistant Assemblies Ideal for government/military, control and safe rooms and guard houses

TASKDOOR offer Forced Entry Bullet Resistant Assemblies (FEBR), designed to resist an intense, prolonged attack by one or more intruders. This door, frame and hardware assembly is intended for applications where the highest level of protection and durability is required. It can repel a few minutes of mob attack and has level 8 bullet resistances, providing the utmost life - safety protection for occupants in the room.

- Provides protection against mob-level ballistic threats
- Hollow metal door and frame bullet resistant to Level 8.
- Factory installed forced entry 3-point exit device with deadbolt system.
- Stainless steel continuous hinge with security studs and fire pins factory installed.

### Other options are:

- Acoustic rating available for high security areas.
- Low Level Blast Resistant available.
- Wood look finish.
- Anti microbial coating for all your healthcare needs.



### Applications:

- School Classrooms
- Post Offices
- Government Facilities
- Airports

The units are available with a welded frame assembly and can be prepared for most hardware preparations to fit specific project needs. The operable panel should be supplied with a self-latching deadbolt without inside trim.

# Life-Safety Solutions



## Bullet Resistant Doors

8 Levels of Bullet-resistant Protection

Level 1  
9 mm  
(3 Shots)



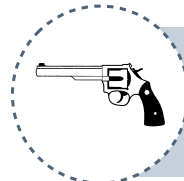
Level 2  
.357 magnum  
(3 Shots)



Level 8  
7.62 mm rie  
(5 Shots)



Level 3  
.44 magnum  
(3 Shots)



Level 7  
5.56 mm rie  
(5 Shots)



Level 4  
.30 caliber rie  
(1 Shot)



Level 6  
9 mm  
(5 Shots)



Level 5  
7.62 mm rie  
(1 Shot)

# Life-Safety Solutions

*TASKDOOR provide effective radiation protection with a full line of high quality lead lined doors and frames. These openings accomplish the important task of containing radiation in sensitive areas. Like Aerospace facilities, microwave transmission rooms, Airports, Defense, military, and security environments, Healthcare - X-ray and imaging rooms, Medical schools, Nuclear power plants.*

## Standard Features

- Lead sheets, available in 1mm to 2mm thickness, integrated into door and frame for strength and vandal resistance.
- Standard 1-3/4" thick doors accommodate standard hardware.
- Continuously welded, seamless door edge and lead lined frame(optional).
- Standard 1mm to 1.6mm galvanized steel.
- 1-3/4" thick full flush door.
- STC rating available.
- Hemmed, smooth finish edges.
- Seamless edges available.
- Hinge reinforcement 4.5mm.
- Chemically treated for paint adhesive oven-dried baked-on factory primer.
- Inverted top and bottom end channels welded to both face sheets for added stiffness.
- Anti microbial coating for all your healthcare needs.



# Life-Safety Solutions



*Focusing on innovation and state of the art automation enables TASKDOOR to provide quality products and outstanding customer service. TASK has developed an RF shielding door and frame opening for use in MRI rooms, test labs, emergency call centers, data and IT storage, RFID scanning areas, government, and military facilities. The conductive surfaces of the opening help to restrict interference from local RF transmitters (such as radio towers, radar, and broad casting units), and, in turn, avoid the compromise of confidential information.*

Hybrid versions of this product are available, making the TASKDOOR RF shielding opening a one of a kind innovation. The opening is offered with a sound rating of up to STC 57. The launch of RF shielding openings aims to assist facility managers, architects, health care professionals and military members with privacy protection where it's needed most, leaving the end user feeling safe and sound.

## **RF Shielding Opening Solutions For Healthcare Facilities**

Radio frequency shielding is necessary for preventing unwanted interference from anything emitting radio frequencies such as cell towers, radio stations and computers. These signals and frequencies interfere with the magnetic field used in magnetic resonance imaging by distorting the quality of the image. This results in a picture that is not as clear as it should be to accurately see and diagnose potential health issues. A critical part of the RF shielding of an MRI room is the door. A TASKDOOR with RF Shielding is the safe and easy RF door solution.

### **Applications:**

Healthcare Facilities, Test Labs, Emergency Call Centers, Sensitive Electronic Installations, Computer Data Processing Security Centers, Government - Military Secure Facilities Financial Centers RFID Scanning Areas

## **RF Shielding Opening Solutions For Commercial, Industrial, and Governmental Facilities:**

Commercial and industrial radio frequency shielding in a commercial or government application is critical in controlled environment testing. TASKDOOR RF Shielding assemblies help ensure sensitive and confidential information is contained. As the testing is in a contained environment, the RF shielded enclosure allows for accuracy in equipment function, procedures and results. An RF shielded enclosure prevents outside interference, thus allowing for accurate test data. Conductive perimeter seals, threshold and caulk are included with each assembly.

### **Applications:**

Business Offices Test Labs Emergency Call Centers Sensitive Electronic Installations Computer Data Processing Security Centers Government - Military Secure Facilities Financial Centers RFID Scanning Areas

### **Standard Options:**

- 2'6" x 6'8" up to 4'0" x 8'0"
- Flush only
- Single swing
- Standard frame anchors.



# School Safety Solutions



*Every school uses doors and frames but few are designed to take full advantage of the role these products can play in creating safer environments for our children. TASKDOOR and frame assembly provide any facility with total user requirements for safety, security and suitability solution. The doors and frames are the backbone of any security solution. TASKDOOR offers a wide range of security door and frame options for new or existing schools keeping the best interest of school-children and school staff in mind.*

## Ensured to last as long as the school building itself

TASKDOOR are designed to handle the abuse in any school building.

- 1.9mm steel face sheets, galvanized.
- Vertical steel-stiffeners.
- "STC" (Sound Transmission Class): 45.
- Integral Welded Glass Lite Trim Kits.
- Recessed Steel Top channels - Welded to both faces. for added strength with optional steel closing cap.
- Hinge reinforcement 4.5mm steel (3/16" plate).
- 2.4mm gage Closer Reinforcement plate optional.
- Galvanized stiffeners optional.
- Welded Frames complete range of sizes and profiles.

## Attack Resistant Opening

TASKDOOR is pleased to offer an Attack Resistant Door opening designed to delay access from intrusion. TASKDOOR standard doors and frames fortified with glazing and hardware that has been tested and certified to withstand a brutal physical attack from an intruder for few minutes. This extra time keeps occupants safe until first responders can neutralize the threat.

Test standard sets requirements and testing methods to certify forced entry and ballistic systems. These standards are intended for use by schools and other public or private facilities that use commercial grade wood and hollow metal entrance doors, framing systems as well as glass and fixed sidelight framing systems.

## Other options

- Antimicrobial coating.
- High STC rating.



**Attack Resistant Opening: Ideal for applications such as schools, places of worship, offices & other public gathering rooms.**

- Extra protection at cost-effective price.
- Almost 60% less cost than a Level 8 bullet resistant door and frame.
- Resists 4-minute attempt by intruder to enter, giving occupants time to escape or take cover and remain secure.
- Uses hollow metal (1.6) or wood doors, hollow metal frame (1.6), Glass and mortise lock with latchbolt, deadbolt and LS escutcheon hardware, and standard weight hinges.

## TASKDOOR - Security Solution Providers

Our Security Solutions Providers and specification consultants work with distributors and end-users to ensure complete life-safety and security solutions for commercial facilities. This is achieved by understanding end-user needs and combining products accordingly. Support services include architectural education, technical expertise, and assistance with code compliance. Visit [www.taskdoors.com](http://www.taskdoors.com) to learn how we can help with your security and life-safety needs.



Leader in door opening solutions supporting end-user for safety, security and suitability.

---

### Engineered Special Doors



---

### Fire Rated Wood Doors

Grandeur      Grandeur

### Non Fire Rated Wood Doors

Regal      Regal

---

### Fire Rated-Non Fire Rated Steel Doors

Regente      Stalwart      Tiara      Majestic  
Victor      Cresta

---

### Hardware



marketing@taskdoor.me  
[www.taskdoors.com](http://www.taskdoors.com)

Leader in door opening solutions supporting end - user for safety, security and suitability.

### **TASK is a brand.**

Copyright 2017. All rights reserved. Reproduction in whole or in part without the express written permission is prohibited. Contents in design, text, performance may change without notice

TASKDOOR – STEEL DOOR

---